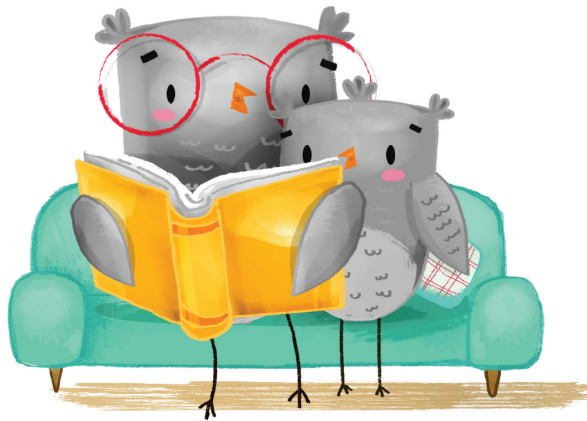




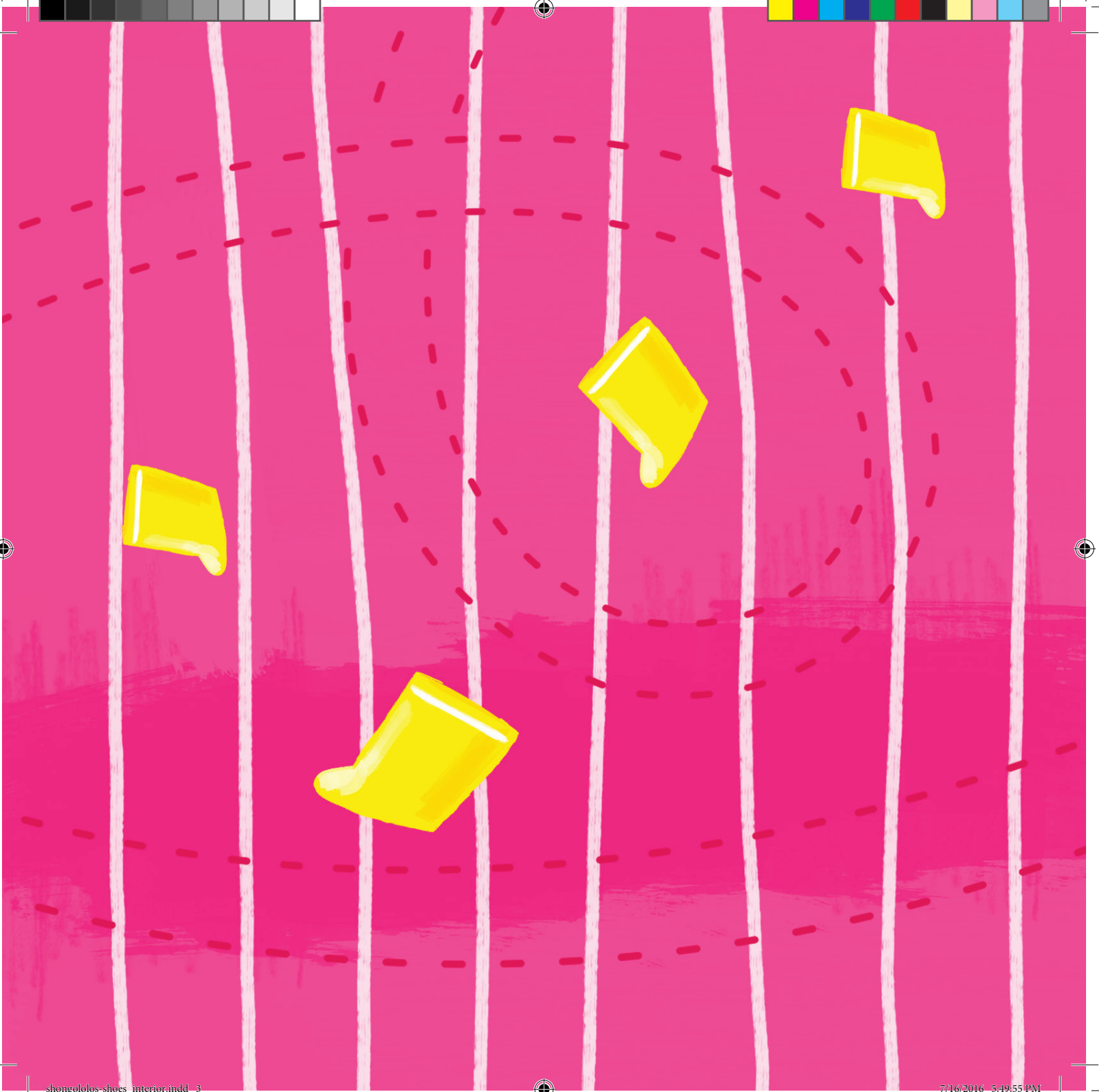
# LIETA TSA MOLEFI

Buka ena ke ea

---









*Lieta tsa Molefi*

(*Shongololo's Shoes* in Sesotho as spoken in Lesotho)

Illustrated by Megan Lötter

Written by Jacqui L'Ange

Designed by Marteli Kleyn

with the help of the Book Dash participants in Cape Town on 5 March 2016.

ISBN: 978-1-928365-98-3

This work is licensed under a Creative Commons Attribution 4.0 Licence (<http://creativecommons.org/licenses/by/4.0/>). You are free to share (copy and redistribute the material in any medium or format) and adapt (remix, transform, and build upon the material) this work for any purpose, even commercially. The licensor cannot revoke these freedoms as long as you follow the following license terms:

**Attribution:** You must give appropriate credit, provide a link to the license, and indicate if changes were made. You may do so in any reasonable manner, but not in any way that suggests the licensor endorses you or your use.

**No additional restrictions:** You may not apply legal terms or technological measures that legally restrict others from doing anything the license permits.

**Notices:** You do not have to comply with the license for elements of the material in the public domain or where your use is permitted by an applicable exception or limitation.

**No warranties are given.** The license may not give you all of the permissions necessary for your intended use. For example, other rights such as publicity, privacy, or moral rights may limit how you use the material.



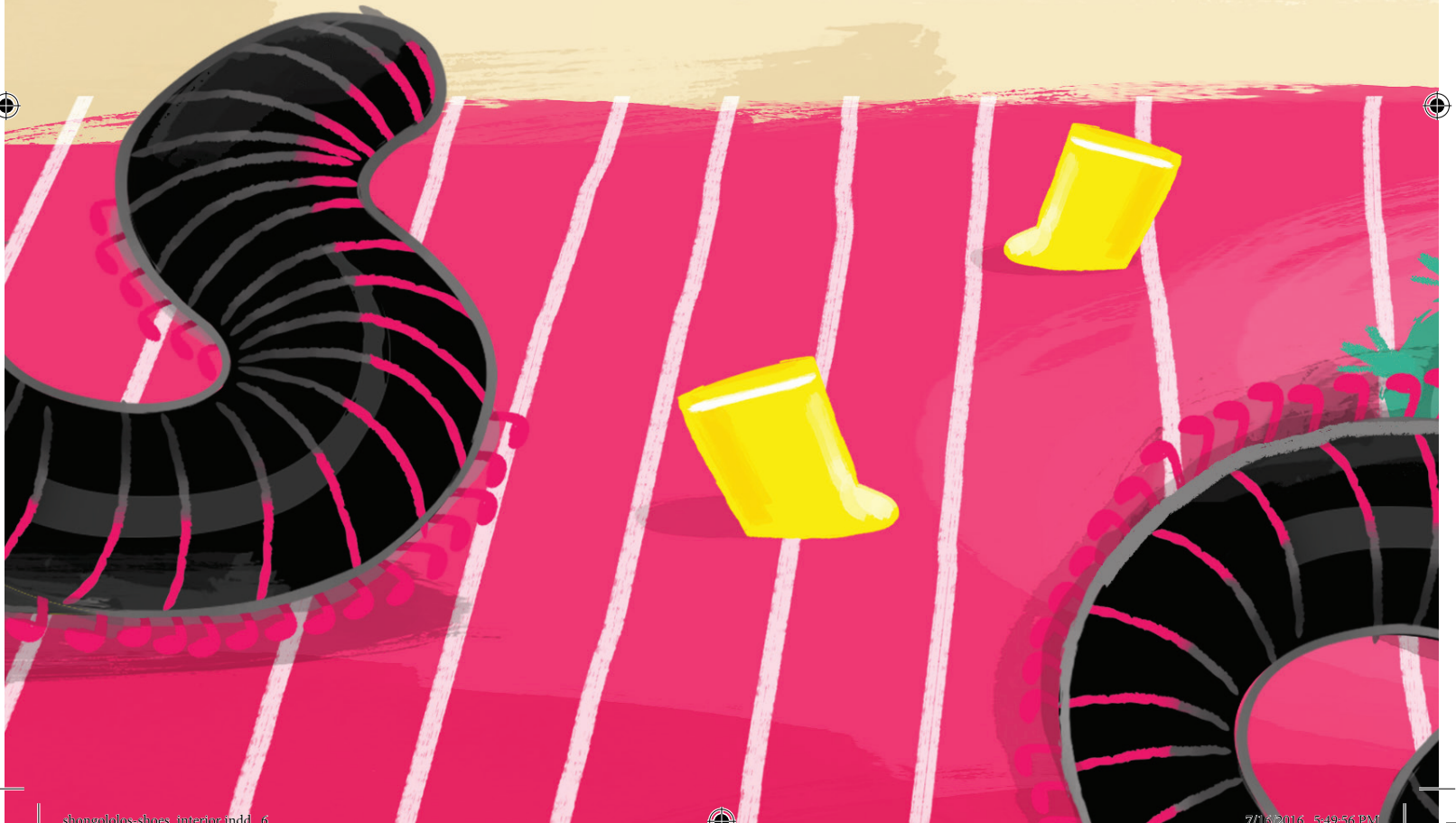


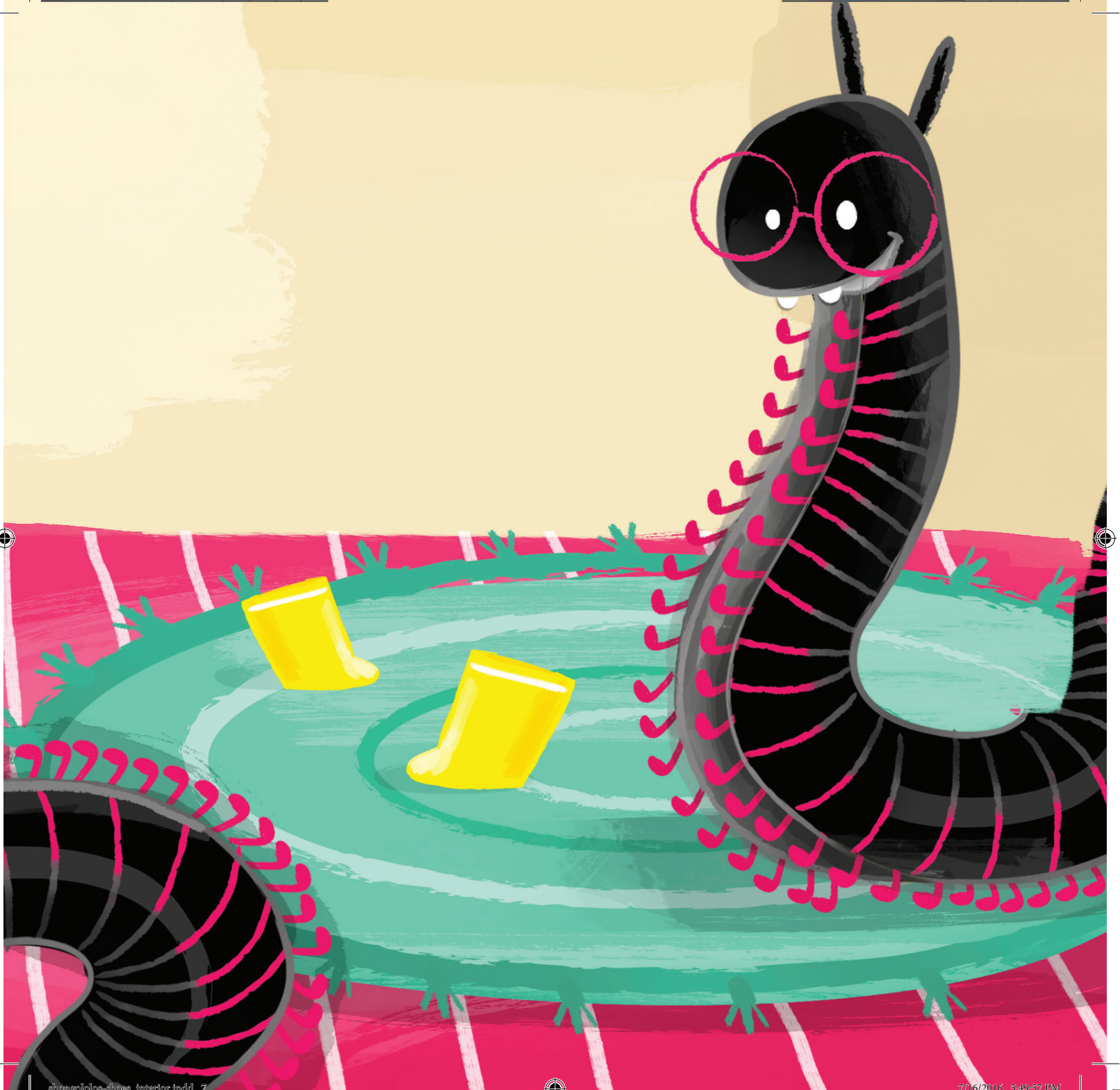


LIETA TSA  
MOLFI



Lieta tsaka kaofela li kae?  
Kea tseba ke ne ke li silile mona!









Ha ke e so bone lieta tsa hau.  
Tsamaea u ilo botsa khofu!







Lieta ha li eo mona.  
Tsamaea u ilo botsa Thuhlo.











Ke tatile - tsamaea u ilo botsa  
Senqanqane.







Lieta? Tse kae?  
Tsamaea u ilo botsa Seinoli.













U re na ke bone lieta tsa hau?  
Ae, ha ke e so li bone.







Na ke sa tla fumane lieta tsaka?





Lieta, eh?  
u lokela ho botsa lits'oene.



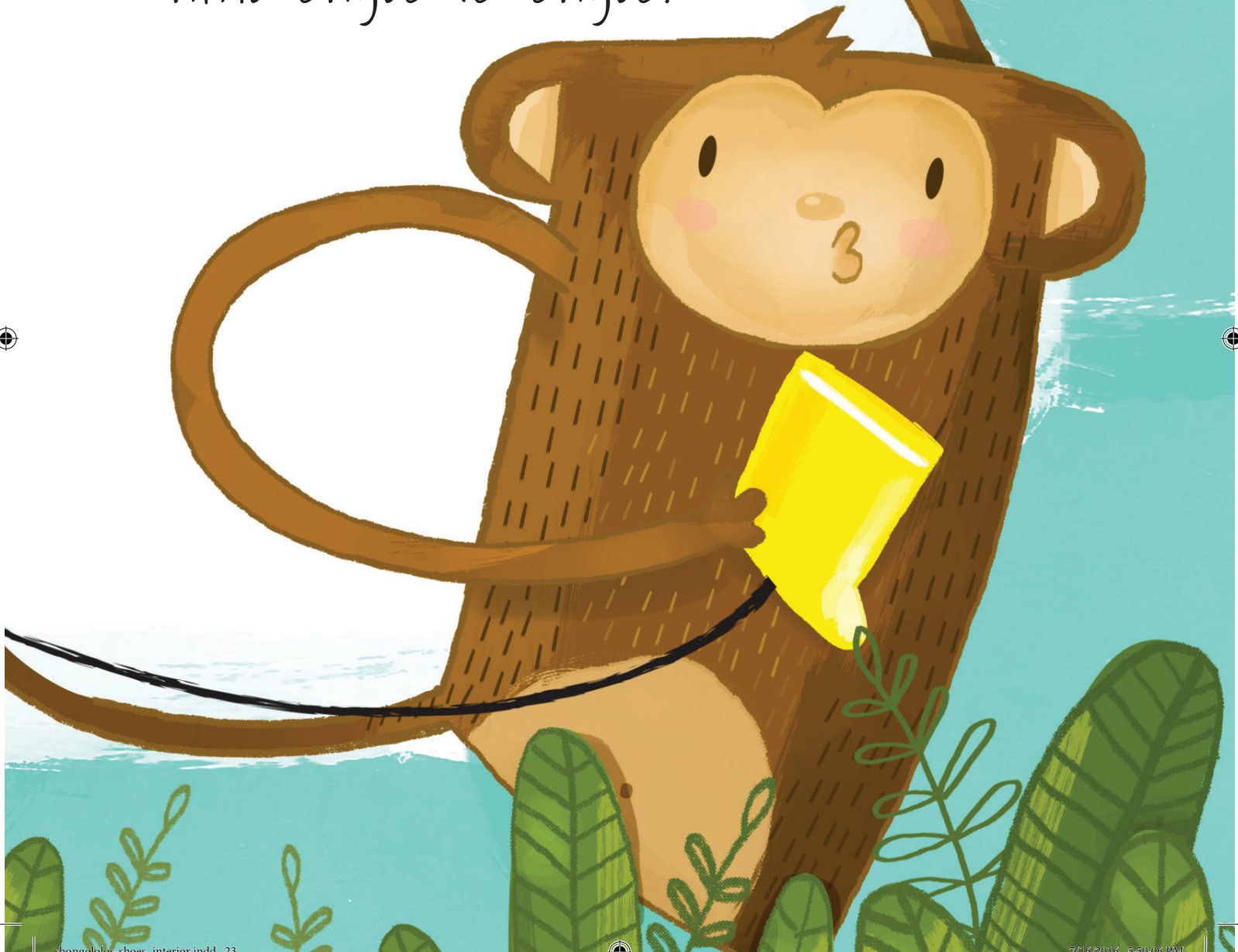




Lumela  
lumela?



Re phathahane, tsamaea u  
ilo botsa Sephoko u tseba  
ntho engoe le engoe.

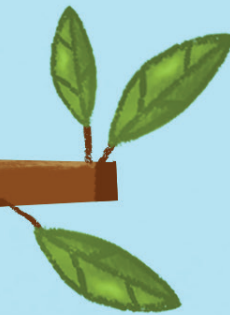








Hmm. Ke na le mohopolo.  
Hobaneng u sa botse tau.









Ke tsa hau tsee? Ke tla li  
khutlisa kaofela ha u ka tla  
moketjaneng oaka!













