



# Dikhomphutha tša Tshilidzi Marwala tša go hlalefa

Ndivhuho Mutsila  
Thulisile Shongwe

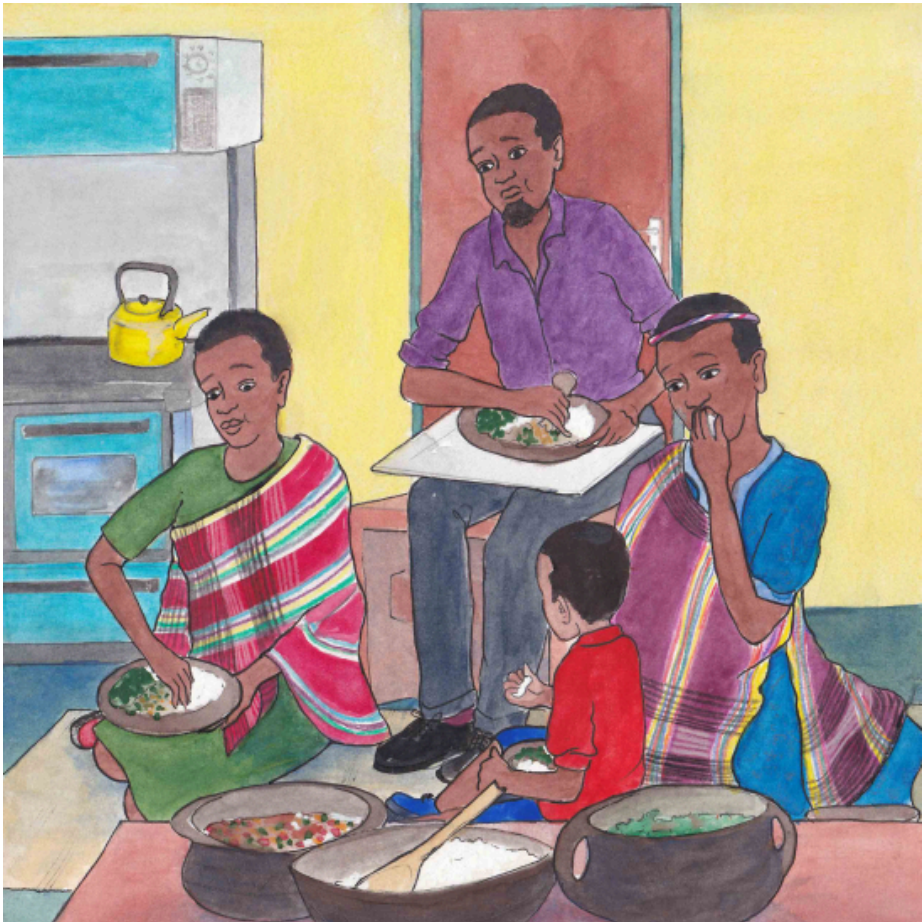


---

Kanegelo ye e bolela ka Tshilidzi Marwala.

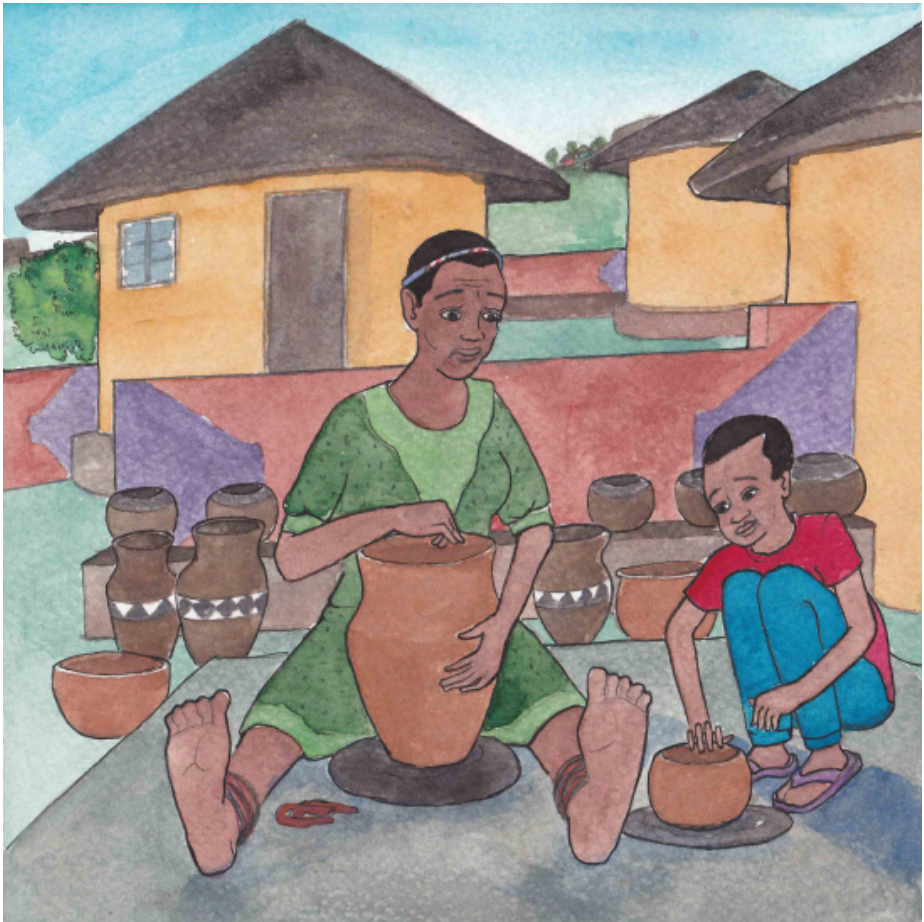
Ke Ramahlale wa Khomphutha le  
Moentšeneere wa Mekhenikhale wa Moafrika  
Borwa.

Kanegelo ye e hlaloša ka mokgwa woo Tshilidzi  
wa go tšwa Duthuni a bilego setsebi sa  
boditšhabatšhaba ka Saense le Theknolotši ka  
gona.



Tshilidzi Marwala o belegwe motseng wa Duthuni, profenseng ya Limpopo. O godišitšwe ke batswadi le koko wa gagwe, Tshiane.

Koko Tshiane o be a bopa dipitša tše di botse ka letsopa. Moakanyetšo wa dipitša tša gagwe tša setšo o be o sepelelana le boentšeneere bja tlhago.



Boentšeneere ke saense ya go akanyetša le go dira dilo tša go swana le metšhene le meago.

Koko Tshiane o be a tseba boentšeneere bja go dira dipitša tša setšo ka letsopa.

Tshilidzi o be a rata go bogela koko wa gagwe ge a bopa dipitša le go mo thuša.



O be a thoma ka go dira sediko sa phaphathi sa botlase bja pitša.

Ke moka a oketša letsopa ka go bopa mahlakore a nkgokolo a pitša.

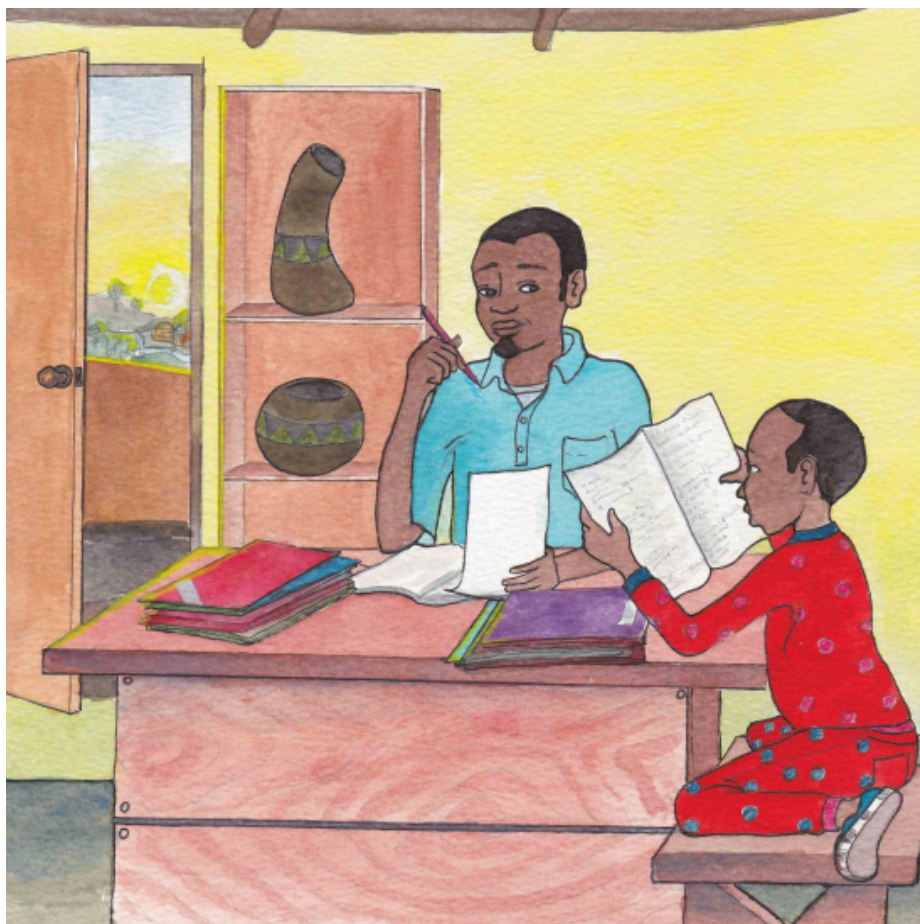
Koko o be a omiša dipitša tša gagwe letšatšing gomme morago a di fiša ka mollo.



Mollo o be o fiša kudu gore o thatafatše letsopa.

Go fiša letsopa ka phišo ya godimo go omiša meetse ka moka ao a lego letsopeng. Seo se dira gore letsopa le kgwahle kudu.

Dipitša tša koko di be di kgwahlile ebile di tšea nako ye telele di sa senyege.



Lerato la Tshilidzi la Saense le Entšeneere le be le e tšwa gape go tatagwe.

Morena Marwala e be e le morutiši wa Mmetse sekolong sa kgauswi.

Pele a ithuta dipalo tša dikatišo sekolong, Tshilidzi o ile a ithuta go atiša dipalo ka go bala dipuku tša tatagwe.



Tshilidzi o be a phela a nyaka go tsebišiša ka dilo. Bošego o be a tšea thotšhe ya tatagwe a bonega godimo gore a bone morumo wa leratadima.

Ka morago ga go phetha dithuto tša poraemari, Tshilidzi o ile a tloga motseng wa gabo a yo tseno sekolo go la Shayadima, moo a bego a tseno sekolo a dula hostele.





Hostele go be go kgahliša ka lebaka la gore o ile a kopana le batho ba bafsa. O ile a ithuta go phela le batho ba go fapafapana.

Go tloga fao, Tshilidzi a ya sekolong se se phagamego sa Mbilwi.

Tshilidzi o be a rata barutiši ba gagwe ba dithuto tša Mmetse le Saense moo sekolong seo. Ba be ba mo hlohleletša go bala le go šoma ka maatla.

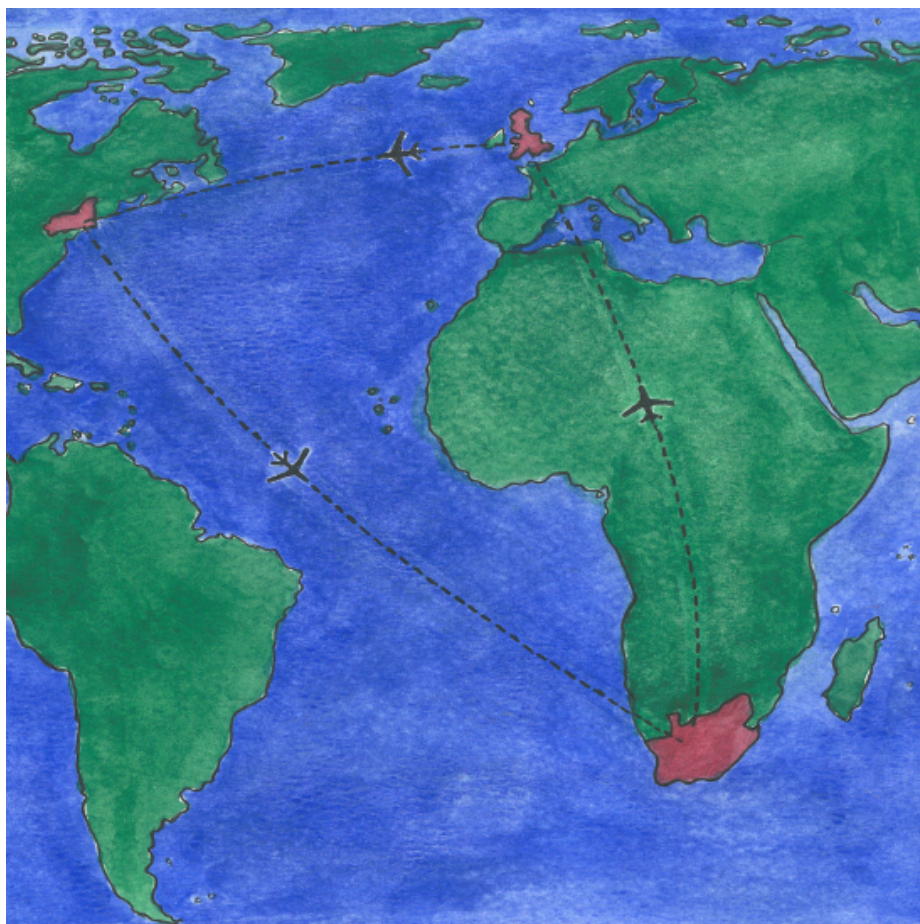


Ngwageng wa gagwe wa mafelelo, Tshilidzi o ile a thopa sefoka sa phadišano ya '*National Youth Science Olympiad*'.

A thopa leeto la go ya Foramong ya Bafsa ya Boditšhabatšhaba ya Saense, kua Engelane.

Tshilidzi o ithutetše Boentseneere bja Mekhenikhale Yunibesithing ya Pretoria.

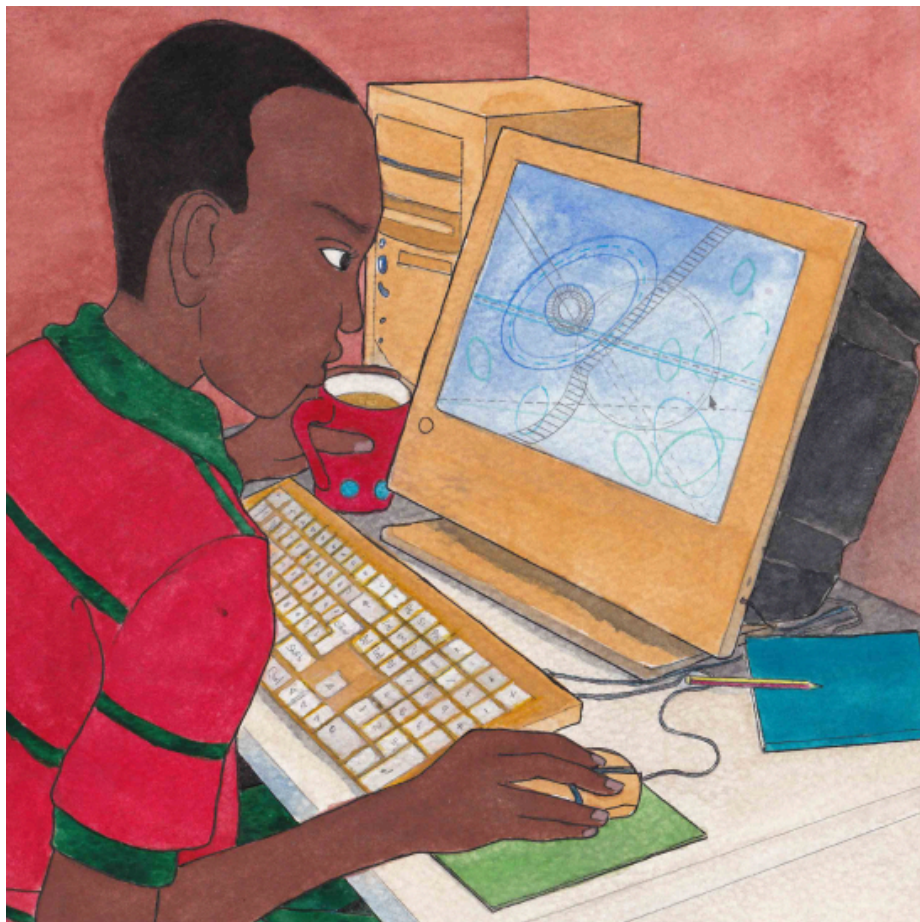
Morago a tšwetša dithuto tša gagwe pele Yunibesithing ya Cambridge.



Kgahlego ya Tshilidzi e be e le go tseba ka mokgwa wo theknolotši e ka fetošago maphelo a rena ka gona. O ithutetše Saense ya Khomphutha go la Englane.

Go tloga fao, a tšwela pele ka go ithuta Theknolotši le Boentšeneere go la Amerika.

Ka morago ga mengwaga a ithuta, Tshilidzi a tšea sephetho sa go tliša tsebo ya gagwe gae, Afrika Borwa.



O thomile mošomo bjale ka motšweletši wa mananeo a khomphutha (*software*), a šoma ka mahlale a maitirelo.

Mahlale a maitirelo ke ge metšhene e dira mešomo yeo gantši e nyakago bohlale bja batho.

Tshilidzi o ile a tšweletša lenaneo la khomphutha la go dira gore dikhomphutha di kgone go kwa tatso le go dupelela.



Lehono Tshilidzi ke setsebi sa boditšhabatšhaba sa Boentšeneere bja Mekhenikhale le Saense ya Khomphutha.

Ka se sebaka, Moprofesara Marwala o šomana le go dira go re dikhomphutha di direle batho dilo tše dintši.

Go fa mohlala, mahlale a maitirelo a ka thuša batho kua dipankeng, dipetlele le dikolong.

---

Mošomo wa Tshilidzi o tsepeletše ka mokgwa  
woo Theknolotši e ka thušago go hlola  
mešomo le go re thuša gore ka moka re phele  
gabonolo.

O oketša tsebo ya Saense le  
Theknolotši. Bophelo bja gagwe bo bontšha  
bohlokwa bja thuto le go šoma ka maatla. Le  
bohlokwa bja go nyaka go tseba.

## —Dipotšišo

1. Na ke bomang batho bao ba hlohleleditšego Tshilidzi go ba ramahlale? Ke ka lebaka la eng o realo?
2. Na Tshilidzi o ithutile eng sekolong sa hostele?
3. Na 'Khomphutha Saense ke eng'? Nyakišišang ka yona.
4. Na 'Baentšeneere ba Mekhenikhale ba šoma go dira eng? Nyakišišang ka mošomo wa bona.

—Dipuku tšeo di lego mo tlhahlamano ye

- Andile Mji
- Asnath Mahapa
- Bongani Mayosi
- Charlotte Maxeke
- Mmantsane Moche Diale
- Mulalo Doyoyo
- Tebello Nyokong
- Tshilidzi Marwala



---

Kanegelo ye e hlamilwe le go ngwalwa ka  
Tshivenda, e le karolo ya projeke ya didirišwa  
tša go bala ka 2020.



Ulwazi Lwethu is a Zenex Foundation funded and initiated project to develop a series of graded and leisure African language readers and teacher support materials. This project is targeted at teaching and supporting learners in the Foundation Phase to improve their home language reading and understanding. The readers have been originated in nine African languages in collaboration with Molteno Institute for Language and Literacies, Nelson Mandela Institute for Education and Rural Development, Room to Read South Africa, and Saide. All resources are developed as Open Education Resources (OER).



NELSON MANDELA  
INSTITUTE FOR  
EDUCATION AND  
RURAL DEVELOPMENT



Room to Read®  
World Change Starts with Educated Children®

Your attribution should include the following:

Title: Dikhomphutha tša Tshilidzi Marwala tša go hlalefa

Author/s: Ndivhuho Mutsila

Translator/s: Dikeledi Queen Shai


Illustrator/s: Thulisile Shongwe

Assurer/s: Connie Makgabo

Language: Sepedi

© Zenex Foundation - Saide 2023

CC BY includes the following elements:

BY  - Credit must be given to the creator

