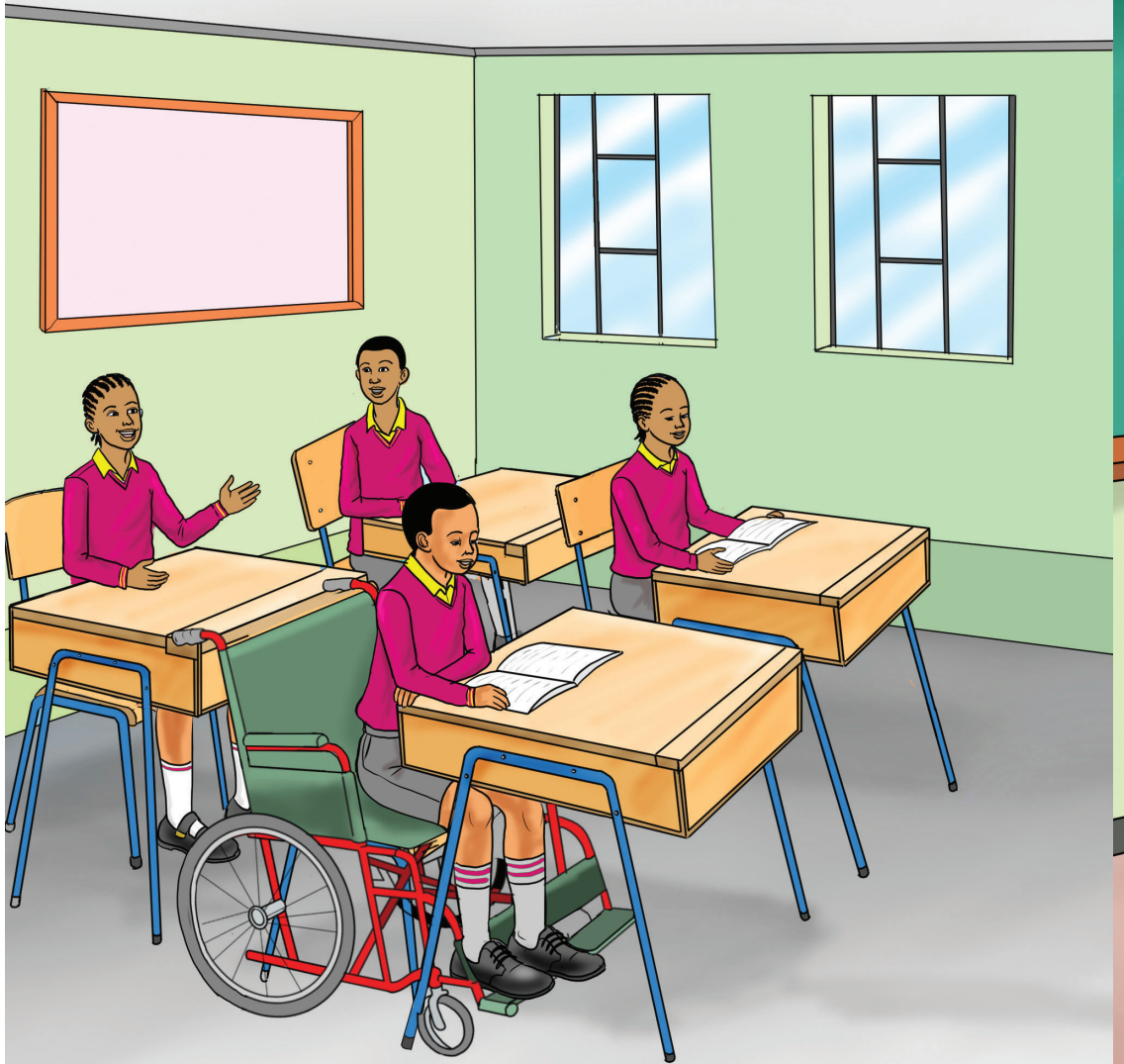




Ĩno nĩ cukuru itũ thaka.





Kamau e thīinī wa kīrathi kīao.

2





Mwarimũ nĩ aingĩra kĩrathi gĩa
aa Kamau.

3





Mwarimũ arandĩka na coka
mbũndi-inĩ.

4



Kamau araguŭria ibuku rŭake.





Kamau arandīka na karamu
ibuku-inī rīake.

6





Rĩu Kamau aratũmĩra rura
gũcora raini.

7





Kamau aratharia ibuku na
raba.

8

